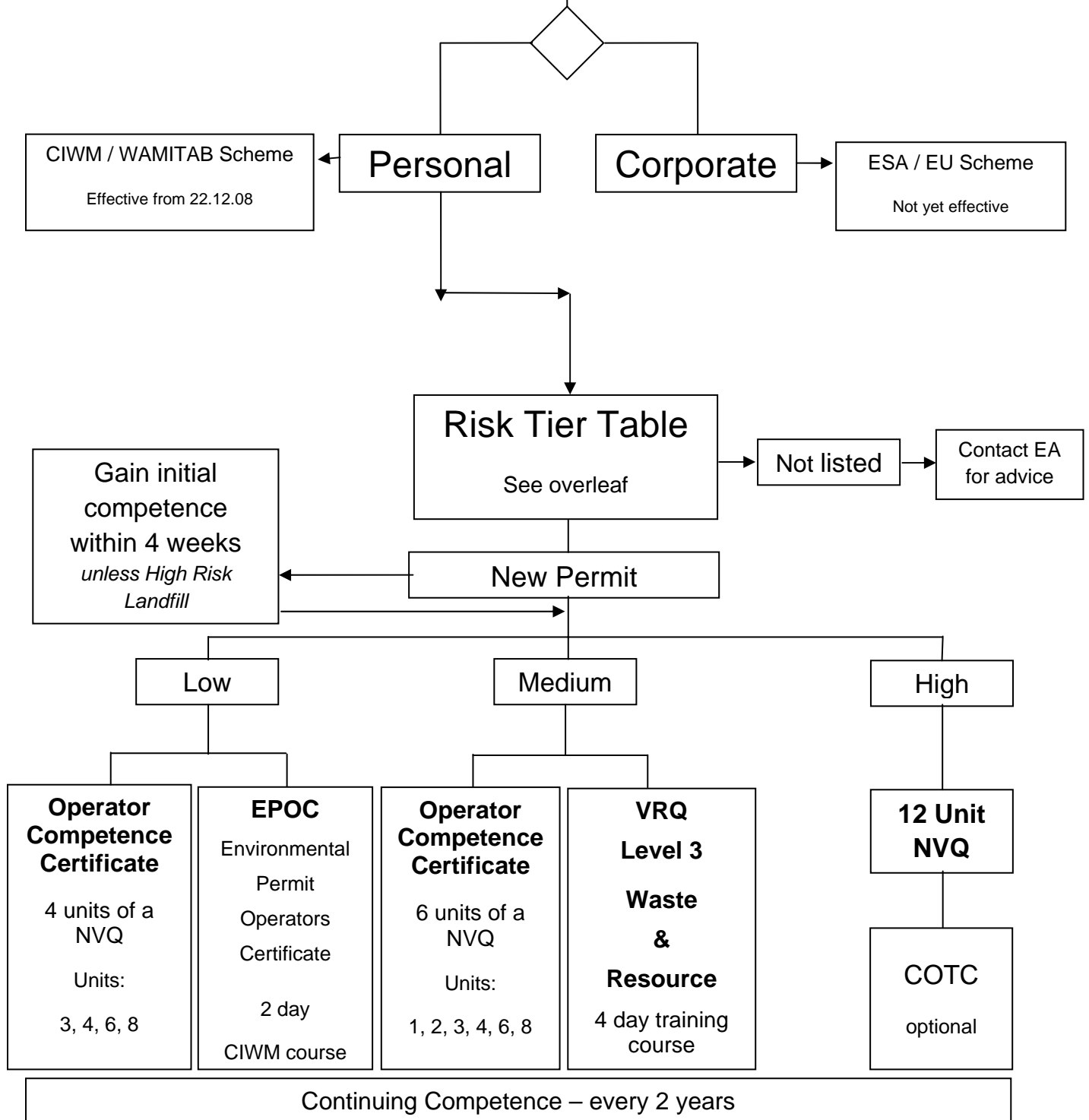


Environmental Permitting Regulations 2007

- enacted from 6 April 2008

Competence Required



Continuing Competence – every 2 years

Note: These regulations apply to England and Wales only and reference should be made to DEFRA's guidance on competence

Technical Competence -Risk Tiers

Risk	Description/Award Title	Award Code Reference	Award/Units required
High	Hazardous Waste Landfill (open and closed)	4LH (Open) 3CL (Closed)	Full Award Full Award
High	Non Hazardous Waste Landfill (open and closed)	4LNH (open) 3CL (closed)	Full Award Full Award
High	Hazardous waste disposal(not incineration or landfill)	4TMH	Full Award
High	Recovery of oil/ organic solvents	4TMH	Full Award
High	Cleaning / regeneration of carbon, charcoal, or ion exchange resins	4TMH	Full Award
High	Production of solid fuel from waste - involving use of heat	4TMH	Full Award
High	Recovery of Hazardous Waste	4TMH	Full Award
High	Hazardous transfer / treatment (not covered in lower tiers)	4TSH or 4TMH	Full Award
High	Hazardous waste transfer/ treatment - clinical waste	4TSHC or 4TMHC	Full Award
High	WEEE ATF chemical processing	4TMH	Full Award
Medium	Non hazardous transfer	4TSMNH6	1NH; 2NH; 3; 4TSNH; 6TSNH; 8NH
Medium	Non hazardous treatment	4TSMNH6	1NH; 2NH; 3; 4TMNH; 6TMNH; 8NH
Medium	Contaminated Land Remediation/Mobile Treatment Facilities (Non-Hazardous Waste)	4TMNHCL6	1NH;2NH;3; 4TMCL; 6TMCL; 8NH
Medium	Contaminated Land Remediation/Mobile Treatment Facilities (Hazardous Waste)	4TMHCL6	1H;2H;3; 4TMCL; 6TMCL; 8H
Medium	Treatment of waste soils	4TMWS6	1NH;2NH;3; 4COM; 6COM; 8NH
Medium	Deposit in lagoons of non hazardous dredging sludges from waterways	4LNHSWS6	1SWS-NH; 2SWS-NH; 3; 4SWS-NH; (6a, 6b OR 6c); 8L
Medium	Non hazardous clinical waste transfer	4TMSNHC6	1NH;2NH;3; 4TSC + 6TSC; 8C
Medium	Non hazardous clinical waste treatment	4TMSNHC6	1NH;2NH;3; 4TMC+ 6TMC; 8C
Medium	CA sites/ HWRC	3CAS6	1CA; 2CA; 3; 4CA; 6CA; 8CA
Medium	Material Recovery Facilities	4TMMRF6	1NH;2NH;3;(4TMNH + 6TMNH); 8NH
Medium	End of Life Vehicle facilities (vehicle depollution / storage prior to depollution)	4TMELV6	1NH;2NH;3;(4TMNH + 6TMNH); 8NH
Medium	Metal Recovery Site (wet scrap e.g. oily metal swarf - free flowing liquid)	4TMMRS6	1NH;2NH;3;(4TMNH + 6TMNH); 8NH
Medium	Composting / biological treatment (including sewage sludge)	4COM6	1NH;2NH;3; 4COM; 6COM; 8NH
Medium	Mechanical Biological Treatment (MBT)	4TMMBT6	1NH;2NH;3;(4TMNH + 6TMNH); 8NH
Medium	WEEE ATF- physical dismantling (including fragmentising)	4TMWE6	1NH;2NH;3;(4TMNH + 6TMNH); 8NH
Medium	Pet Crematoria / non schedule 1 incinerators (EPR 07)	4INCPC6	1H; 2H; 3; 4INC; 6INC; 8H
Medium	Inert landfill (open site) Single Waste Stream (SWS)	3INL6	1SWS-In; 2SWS-In; 3; 4SWS-In; (6a or 6b or 6c); 8L
Medium	Inert landfill (open site)	3INL6	1In; 2In; 3; 4Lin; (6a or 6b or 6c); 8L
Medium	Inert Landfill (closed site)	3CL6	3, 4CL, 5, 8CL, 12, (6CLa or 6CLb)
Low	In house storage of waste Non-Hazardous	4TSIHS4	3; 4TSNH; 6TSNH; 8NH
Low	In house storage of waste Inert	4TSIHS4	3; 4TSIn; 6TSIn; 8In
Low	Inert transfer	4TSM4	3; 4TSIn; 6TSIn 8In
Low	Inert physical treatment	4TSM4	3; 4TMIn; 6TMIn; 8In
Low	MRS dry scrap - no free flowing liquid (also to include separately collected batteries)	4TSMRS4	3; 4TSNH; 6TSNH; 8NH
Low	WEEE (storage only)	4TSWE4	3; 4TSNH; 6TSNH; 8NH
Low	Pet Cemetery	4LFPC4	3; 4SWSNH; 6C; 8L