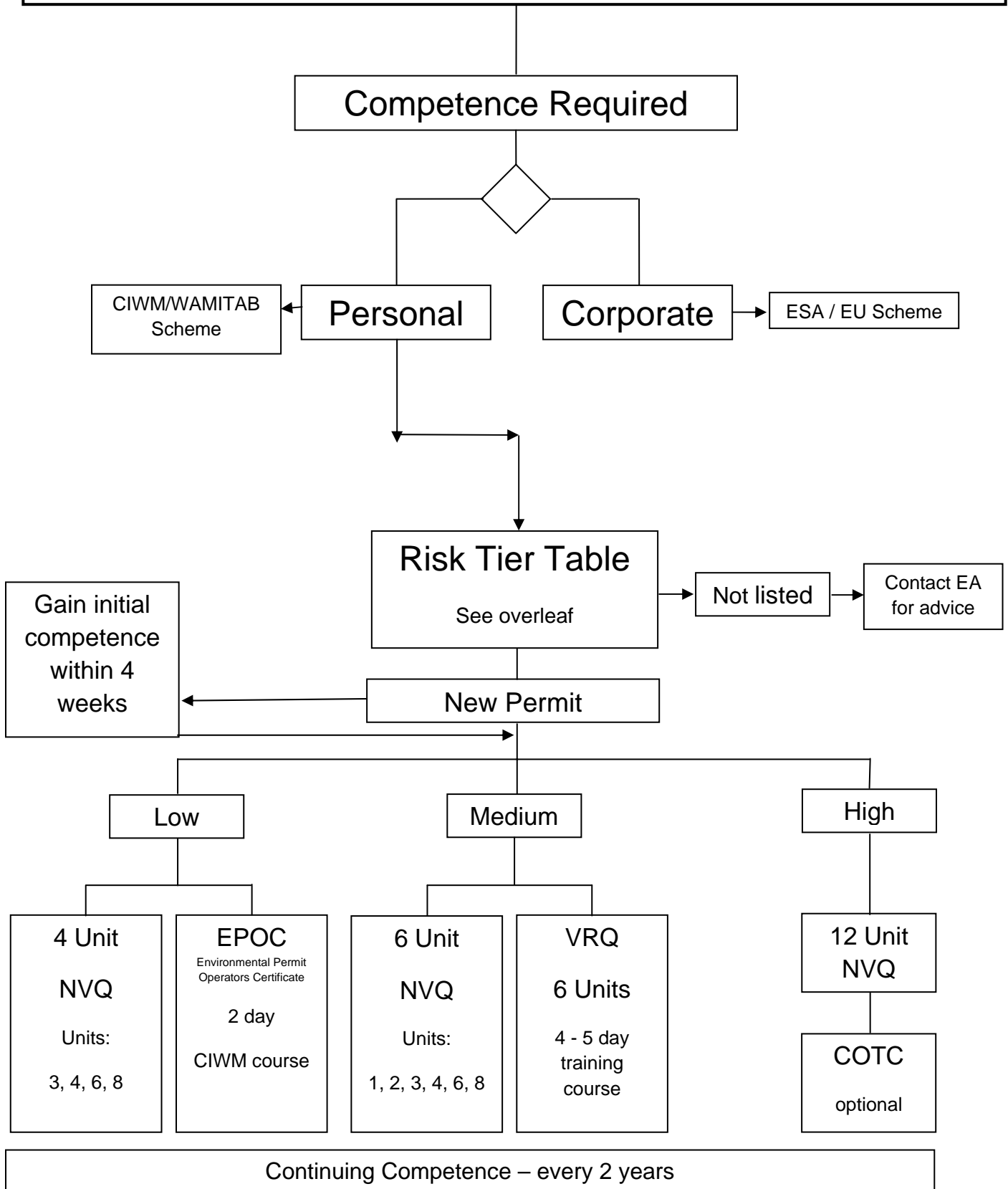


Environmental Permitting Regulations 2007

- due to be enacted on 6 April 2008



Note: These regulations apply to England and Wales only and reference should be made to DEFRA's guidance on competence

Technical Competence -Risk Tiers (Standard Rule Permit Headings – facility types)

Risk	Description	'SRP or schedule 1 ref
High	Hazardous Waste Landfill (open and closed)	
High	Non Hazardous Waste Landfill (open and closed)	
High	Deposit in lagoons of non hazardous dredging sludges from waterways	SR12
High	Incineration of Hazardous waste	
High	Incineration of non hazardous waste - >1 tonne per hour	
High	Hazardous waste disposal(not incineration or landfill)	
High	Recovery of oil/ organic solvents	
High	Cleaning / regeneration of carbon, charcoal, or ion exchange resins	
High	Production of solid fuel from waste – involving use of heat	
High	Recovery of Hazardous Waste	
High	Hazardous transfer / treatment (not covered in lower tiers)	SR9, SR5, SR6, SR7, SR8
High	Hazardous waste transfer/ treatment – clinical waste	SR25, SR26
High	WEEE ATF chemical processing	
Medium	Non hazardous transfer / with or with out treatment.	SR1, SR2, SR3, SR4
Medium	Contaminated Land Remediation	
Medium	Treatment of waste soils	
Medium	Non hazardous clinical waste transfer/ treatment	SR25, SR26
Medium	CA sites/ HWRC	SR13, SR14
Medium	Material Recovery Facilities	SR15, SR16
Medium	End of Life Vehicle facilities (vehicle depollution / storage prior to depollution)	SR21
Medium	Metal Recovery Site (wet scrap e.g. oily metal swarf – free flowing liquid)	SR24
Medium	Composting / biological treatment (including sewage sludge)	SR17, SR18, SR20
Medium	MBT	SR19
Medium	WEEE ATF- physical dismantling (including fragmentising)	SR 24
Medium	Pet Crematoria/non Schedule 1 incinerators (EPR 07)	SR27
Medium	Mobile Treatment Facilities	
Medium	Inert landfills (open and closed)	
Low	In house storage of waste	
Low	Inert transfer / phy treatment	SR10 / SR11
Low	MRS dry scrap – no free flowing liquid (also to include separately collected batteries)	SR22, SR23
Low	WEEE (storage only)	SR 24